

# 7.5FT X 7.5FT LUMIÈRE LIGHT WALL®

LUMIÈRE LIGHT WALL®  
PRODUCT CODE: LLW3X3



On frame On graphic



Graphic Endcaps (Optional)



Frame



Channel Bars on Frame



Ladder Lights

## PRODUCT DESCRIPTION

Illuminate your message with the Lumiere Light Wall®! Lumiere ladder lights make backlit graphics pop on this innovative combo display of silicone-edge graphics and portable RPL fabric pop ups. Plus, the Lumiere shrinks down in size: simply collapse the geometric frame and the SEG bungeed channel bars, and fold or roll the fabrics graphics. Setup requires 1 person and 5-10 minutes. SEG portability is easy and stylish.

DISPLAY DIMENSION	88.75" W x 88.75" H x 14.5" D
-------------------	-------------------------------

## GRAPHIC DIMENSIONS

MAIN GRAPHIC	89" W x 89" H
END CAP GRAPHIC	14.25" W x 89" H

## GRAPHIC MATERIAL

UV Backlit Fabric

## GRAPHIC FINISHING

Silicone beading is sewn around the perimeter of the fabric graphic. Silicone beading is hidden from view once installed.

## DISPLAY CONSTRUCTION

Aluminum Frame

## LADDER LIGHTS SPECIFICATION

EACH LIGHT BEAD	1.0W
ANGLE	170°
OPERATING VOLTAGE	DC12V/24V
TOTAL WATTAGE	315W
TOTAL AMPERAGE	13.5A

## MODULAR LED CURTAIN 30W KIT 1X3

POWER (W): 84	LM/ (W): 110	LM/ (W): 9240
---------------	--------------	---------------

## TRANSFORMER SPECIFICATION

OUTPUT	24V/3.75A
INPUT	AC100-240V/1.3A

## SHIPPING WEIGHTS & DIMENSIONS

Lumiere Ladder Lights - 3 Units	
Shipping Weight	23 lbs
Shipping Dimensions	12" L x 12.25" W x 33.5" H
Lumiere Light Wall	
Shipping Weight	28 lbs (frame only) 32 lbs (with graphics)
Shipping Dimensions	34" L x 14" W x 9" H

## LARGE QUANTITY FREIGHT

Lumiere Ladder Lights	
Freight Shipping	30 boxes per 48" L x 40" W x 28.5" H skids
Freight Weight	168 lbs
Lumiere Light Wall	
Freight Shipping	15 boxes per 48" L x 40" W x 48" H skids
Freight Weight	336 lbs (frame only) 384 lbs (with graphics)

## GRAPHIC TURN AROUND TIME

2 business days after proof approval

AVAILABILITY	CA and PA
--------------	-----------

**\*Please Note:** Lumiere Ladder Light® sets are placed on the front side of the frame only. They are not double-sided and may not be used as so.

# 7.5FT X 7.5FT LUMIÈRE LIGHT WALL®

LUMIÈRE LIGHT WALL®

PRODUCT CODE: LLW3X3

## AVAILABLE ACCESSORIES



La Caja Case



Genie Counter Case



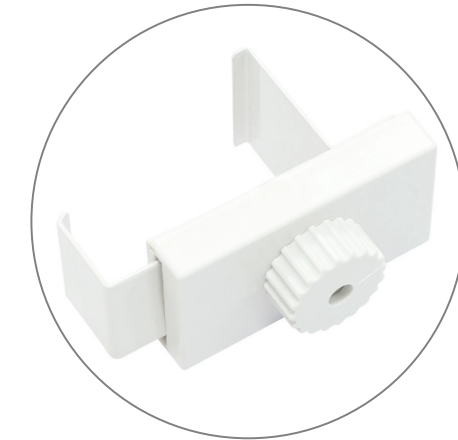
Hard Case Podium



Stabilization Feet



Straight Connector



L Link Connector



Internal Showcase



Lumiere Jumper Cable\*

\*Note: Lumiere Jumper Cable is used to connect the Lumiere Ladder Lights between the Internal Showcase.

# 7.5FT X 7.5FT LUMIÈRE LIGHT WALL®

LUMIÈRE LIGHT WALL®

PRODUCT CODE: LLW3X3

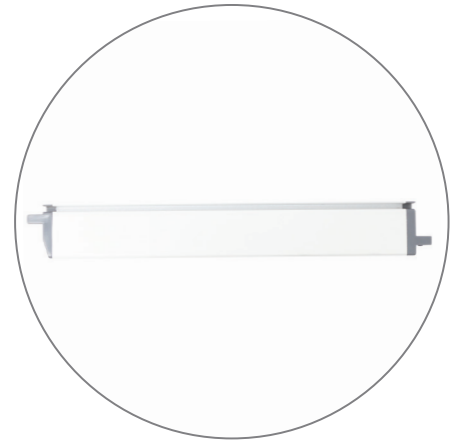
## PARTS LIST



Qty 1 - Pop Up Frame



Qty 8 - 3 Section Channel Bars



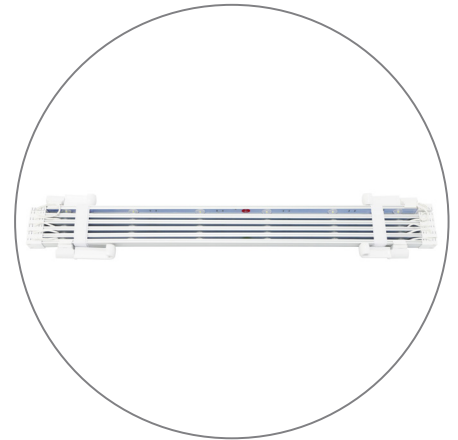
Qty 4 - End Cap Channel Bars



Qty 1 - Carry Bag



Qty 1 - Channel Bar Bag



Qty 9 - Ladder Lights



Qty 3 - Transformer



Qty 3 - Transformer Power Cord



Qty 3 - Ladder Light Travel Bag

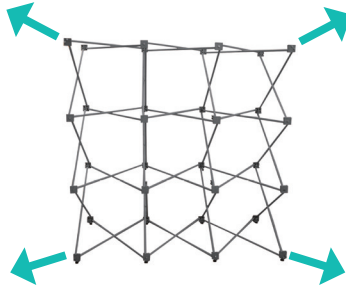


## SET UP INSTRUCTIONS 1/2

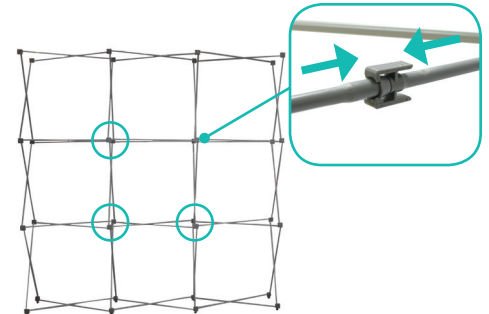
### Set Up Pop Up Frame



**a.** Place frame with the adjustable feet facing down.

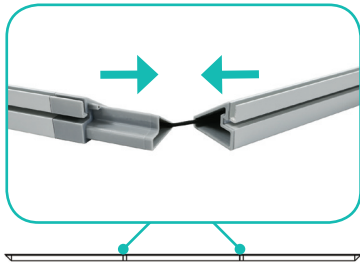


**b.** Expand the frame.

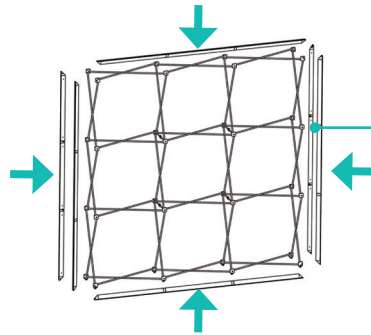


**c.** Close frame by pushing the outside of the frame until male and female ends connect.

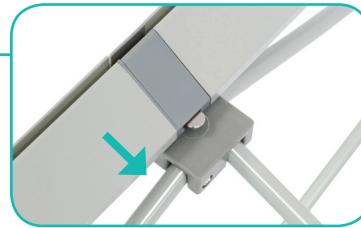
### Insert Channel Bars



**a.** Expand each channel bar. Follow bungee to connect.



**b.** Attach channel bars to frame.



**c.** Slide channels bars onto frame, from top to bottom, then secure onto metal peg.



**d.** Attach the top and bottom end caps on each side of the frame.

### Unfold The Hooks



**a.** Locate each hook.



**b.** Turn each hook outward.



**c.** Twist each hook to face the front of the ladder light.

# 7.5FT X 7.5FT LUMIÈRE LIGHT WALL®

LUMIÈRE LIGHT WALL®

PRODUCT CODE: LLW3X3

## SET UP INSTRUCTIONS 2/2

### Hook Ladder Lights



**a.** Hang ladder lights from top "x" bar. **Note:** Make sure to follow label that says "UP" or "DOWN".



**b.** Hang ladder lights in each section of the frame until reaching the bottom of the frame.

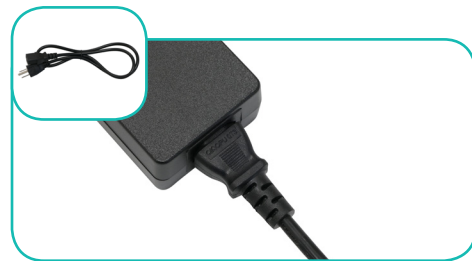
### Connect Ladder Lights



**a.** Connect each ladder light together using the barrel connectors.



**b.** Connect bottom set of lights to the LED Driver using the barrel connectors



**c.** Insert power cord to the LED Driver. Plug other side into your main power outlet.

### Install Graphic



**a.** In each corner, insert the silicone edge beading into the groove.



**b.** Then insert the remainder of the beading. Repeat blackout installation for the back frame.



**c.** Then repeat graphic installation on the end caps for each side.