

# 5FT X 7.5FT LUMIÈRE LIGHT WALL®

LUMIÈRE LIGHT WALL®

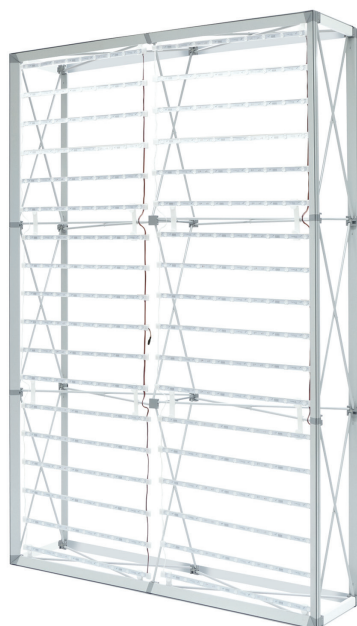
PRODUCT CODE: LLW2X3



On frame On graphic



Graphic Endcaps (Optional)



Frame



Channel Bars on Frame



Ladder Lights

## PRODUCT DESCRIPTION

Illuminate your message with the Lumiere Light Wall®! Lumiere ladder lights make backlit graphics pop on this innovative combo display of silicone-edge graphics and portable RPL fabric pop ups. Plus, the Lumiere shrinks down in size: simply collapse the geometric frame and the SEG bungeed channel bars, and fold or roll the fabrics graphics. Setup requires 1 person and 5-10 minutes. SEG portability is easy and stylish.

<b>DISPLAY DIMENSION</b>	59.25" W x 88.75" H x 14.5" D
--------------------------	-------------------------------

## GRAPHIC DIMENSIONS

<b>MAIN GRAPHIC</b>	60" W x 88.5" H
<b>END CAP GRAPHIC</b>	14.25" W x 89" H

## GRAPHIC MATERIAL

UV Backlit Fabric

## GRAPHIC FINISHING

Silicone beading is sewn around the perimeter of the fabric graphic. Silicone beading is hidden from view once installed.

## DISPLAY CONSTRUCTION

Aluminum Frame

## LADDER LIGHTS SPECIFICATION

<b>EACH LIGHT BEAD</b>	1.0W
<b>ANGLE</b>	170°
<b>OPERATING VOLTAGE</b>	DC12V/24V
<b>TOTAL WATTAGE</b>	210W
<b>TOTAL AMPERAGE</b>	9A

## MODULAR LED CURTAIN 30W KIT 1X2

<b>POWER (W): 62</b>	<b>LM/ (W): 110</b>	<b>LM/ (W): 6820</b>
----------------------	---------------------	----------------------

## TRANSFORMER SPECIFICATION

<b>OUTPUT</b>	24V/3.75A
<b>INPUT</b>	AC100-240V/1.3A

## SHIPPING WEIGHTS & DIMENSIONS

Lumiere Ladder Lights - 2 Units	
Shipping Weight	16 lbs
Shipping Dimensions	13" L x 9.5" W x 36.25" H
Lumiere Light Wall	
Shipping Weight	20 lbs (frame only) 24 lbs (with graphics)
Shipping Dimensions	34" L x 14" W x 9" H

## LARGE QUANTITY FREIGHT

Lumiere Ladder Lights	
Freight Shipping	30 boxes per 48" L x 40" W x 28.5" H skids
Freight Weight	168 lbs
Lumiere Light Wall	
Freight Shipping	15 boxes per 48" L x 40" W x 48" H skids
Freight Weight	240 lbs (frame only) 288 lbs (with graphics)

## GRAPHIC TURN AROUND TIME

2 business days after proof approval

<b>AVAILABILITY</b>	CA and PA
---------------------	-----------

**Please Note:** Lumiere Ladder Light® sets are placed on the front side of the frame only. They are not double-sided and may not be used as so.

# 5FT X 7.5FT LUMIÈRE LIGHT WALL®

LUMIÈRE LIGHT WALL®

PRODUCT CODE: LLW2X3

## AVAILABLE ACCESSORIES



La Caja Case



Genie Counter Case



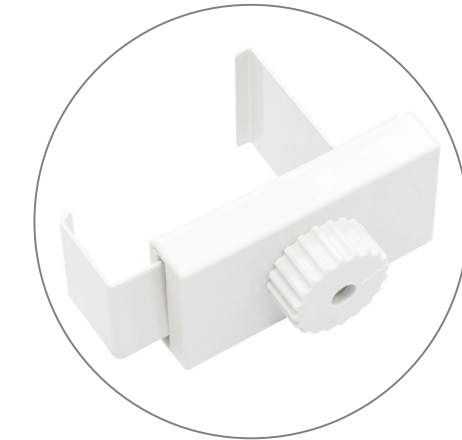
Hard Case Podium



Stabilization Feet



Straight Connector



L Link Connector



Internal Showcase



Lumiere Jumper Cable\*

**\*Note:** Lumiere Jumper Cable is used to connect the Lumiere Ladder Lights between the Internal Showcase.

# 5FT X 7.5FT LUMIÈRE LIGHT WALL®

LUMIÈRE LIGHT WALL®

PRODUCT CODE: LLW2X3

## PARTS LIST



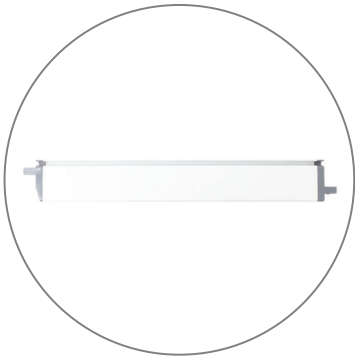
Qty 1 - Pop Up Frame



Qty 4 - 2 Section Channel Bars



Qty 4 - 3 Section Channel Bars



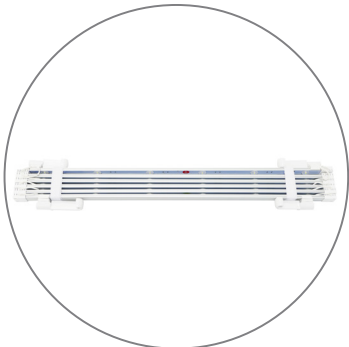
Qty 4 - End Cap Channel Bars



Qty 1 - Carry Bag



Qty 1 - Channel Bar Bag



Qty 6 - Ladder Lights



Qty 2 - Transformer



Qty 2 - Transformer Power Cord



Qty 2 - Ladder Light  
Travel Bag

# 5FT X 7.5FT LUMIÈRE LIGHT WALL®

LUMIÈRE LIGHT WALL®  
PRODUCT CODE: LLW2X3

SCAN FOR  
VIDEO SET UP

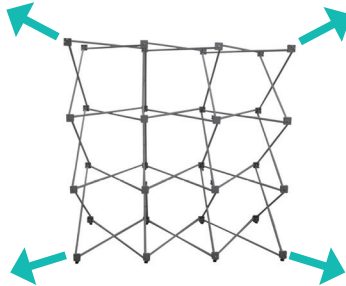


## SET UP INSTRUCTIONS 1/2

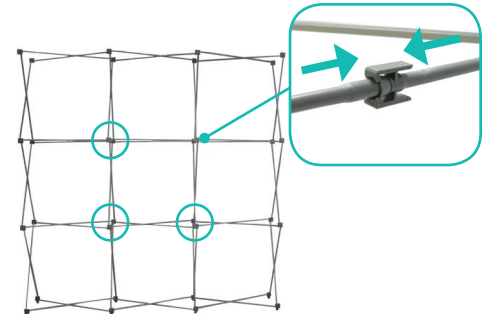
### Set Up Pop Up Frame



**a.** Place frame with the adjustable feet facing down.

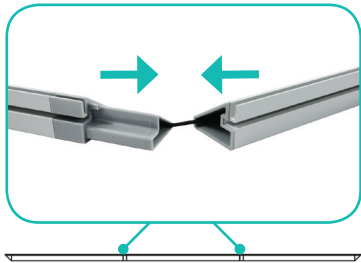


**b.** Expand the frame.

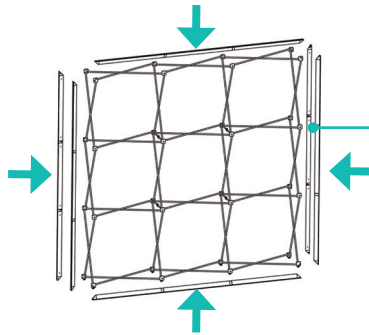


**c.** Close frame by pushing the outside of the frame until male and female ends connect.

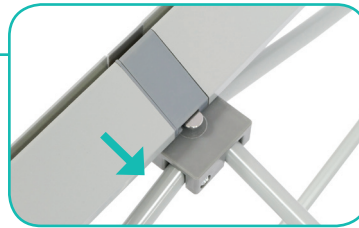
### Insert Channel Bars



**a.** Expand each channel bar. Follow bungee to connect.



**b.** Attach channel bars to frame.



**c.** Slide channels bars onto frame, from top to bottom, then secure onto metal peg.



**d.** Attach the top and bottom end caps on each side of the frame.

### Unfold The Hooks



**a.** Locate each hook.



**b.** Turn each hook outward.



**c.** Twist each hook to face the front of the ladder light.

# 5FT X 7.5FT LUMIÈRE LIGHT WALL®

LUMIÈRE LIGHT WALL®

PRODUCT CODE: LLW2X3

## SET UP INSTRUCTIONS 2/2

### Hook Ladder Lights

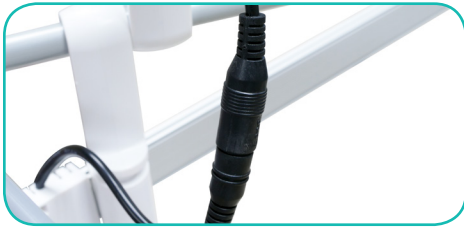


**a.** Hang ladder lights from top "x" bar. **Note:** Make sure to follow label that says "UP" or "DOWN".



**b.** Hang ladder lights in each section of the frame until reaching the bottom of the frame.

### Connect Ladder Lights



**a.** Connect each ladder light together using the barrel connectors.



**b.** Connect bottom set of lights to the LED Driver using the barrel connectors



**c.** Insert power cord to the LED Driver. Plug other side into your main power outlet.

### Install Graphic



**a.** In each corner, insert the silicone edge beading into the groove.



**b.** Then insert the remainder of the beading. Repeat blackout installation for the back frame.



**c.** Then repeat graphic installation on the end caps for each side.