

SILVERSTEP® RETRACTABLE BANNER STAND 60"

RETRACTABLE BANNER STANDS

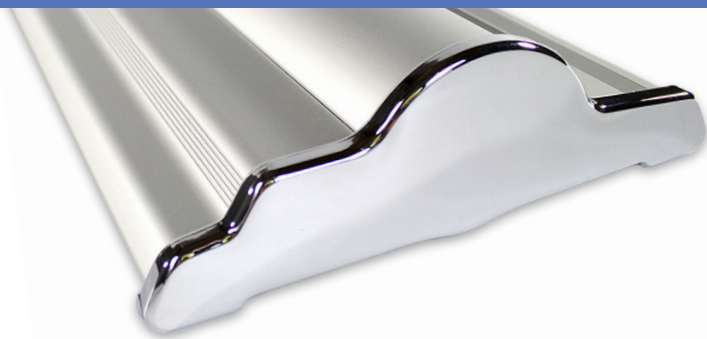
PRODUCT CODE: SS60



On frame



On graphic



PRODUCT DESCRIPTION

Durable and uniquely designed, this aluminum stand is the perfect combination of versatility, appeal, and affordability.

DISPLAY DIMENSION	61.5" W x 9.5" H x 3" D
GRAPHIC DIMENSIONS	60" W x 69" to 92" H

GRAPHIC MATERIAL

Super Flat Vinyl or Fabric

GRAPHIC FINISHING

5" Bleed at the bottom

DISPLAY CONSTRUCTION

Sturdy Aluminum Construction

SHIPPING WEIGHTS & DIMENSIONS

SINGLE BOX - 1 Unit

Shipping Weight	25 lbs (stand only) 26 lbs (frame and graphic)
Shipping Dimensions	67" H x 13" W x 5" D

MASTER BOX - 4 Units

Shipping Weight	111 lbs (stand only) 112 lbs (frame and graphic)
Shipping Dimensions	69" H x 27" W x 13" D

LARGE QUANTITY FREIGHT

Master Box - Freight Shipping	6 boxes per 48" L x 40" W x 69" H skids
Master Box - Freight Weight	333 lbs (frame only) 336 lbs (frame & graphic)

GRAPHIC TURN AROUND TIME

2 to 3 business days after proof approval



Silverstep Magnetic Connector
(Optional)

PARTS LIST



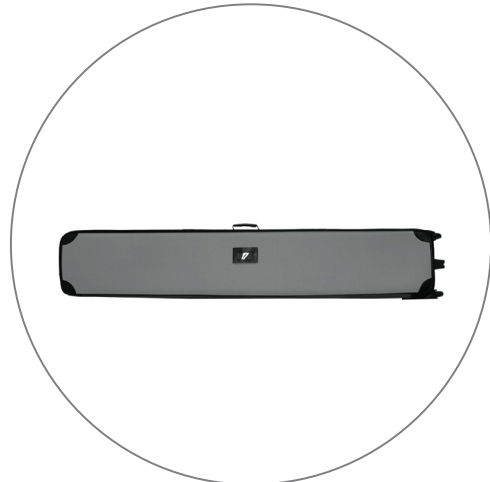
Qty 1 - Silverstep Stand



Qty 1 - Clamp Bar



Qty 2 - Telescopic Support Poles



Qty 1 - Silver Travel Bag

SILVERSTEP® RETRACTABLE BANNER STAND 60"

RETRACTABLE BANNER STANDS

PRODUCT CODE: SS60

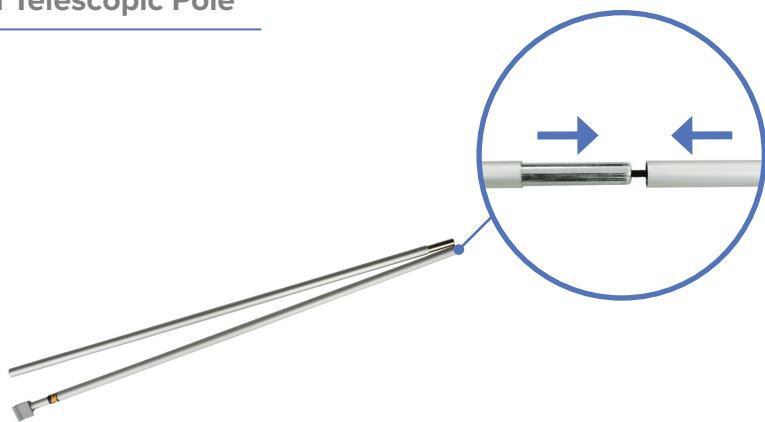
SET UP INSTRUCTIONS

Prepare Banner Stand

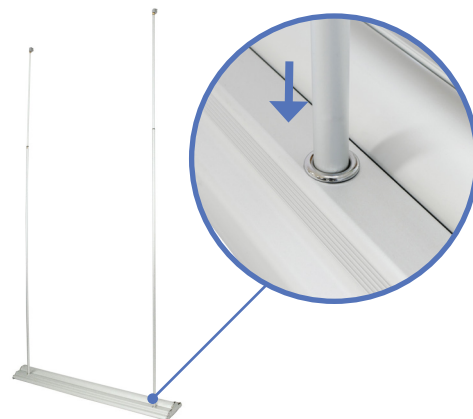


a. Remove Silverstep Stand out of bag.

Install Telescopic Pole



a. Assemble telescopic poles.



b. Insert telescopic poles into hole of the base stand.

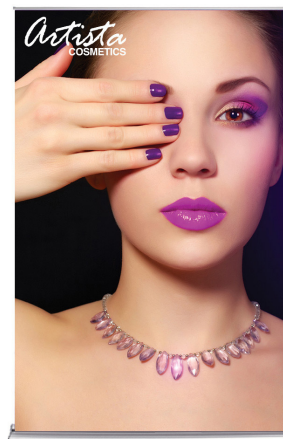
Pull Up Banner



a. Pull banner out of base.



b. Attach telescopic poles to the clamp bar.
Adjust pole to desired height.



c. Complete stand.

SILVERSTEP® RETRACTABLE BANNER STAND 60"

RETRACTABLE BANNER STANDS

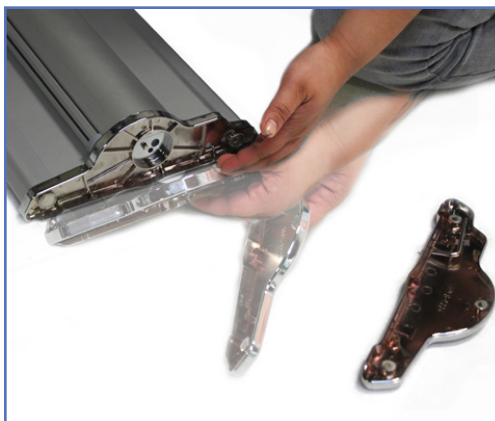
PRODUCT CODE: SS60

SET UP INSTRUCTIONS

Install Magnetic Connector



a. Pull off end caps from Silverstep.



b. Push connector piece until it locks in position.



c. Connect another Silverstep onto it.

Complete Connection

